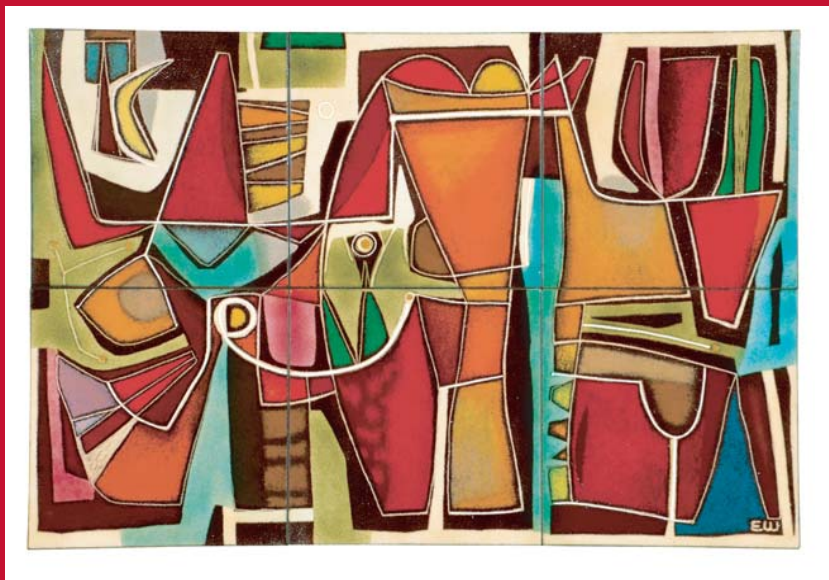


Painting with Fire

Masters of Enameling in America
1930-1980

January 12 - August 19, 2007

A Unique Sponsorship Opportunity



Your name (or the name of a loved-one, colleague, business, etc.) and a short message will be professionally mounted next to your sponsored work of art during the entire run of the exhibition.

Long Beach Museum of Art

Sponsor An Artwork Today

Artwork Sponsor Order Form

_____ artwork(s) (limit two) at \$250 each = \$ _____

I have enclosed a tax-deductible contribution of \$ _____

List the artist, title and artwork number of three choices in order of preference.

We will contact you if your selections are unavailable.

	Artist	Title	Artwork #
1st:	_____	_____	_____
2nd:	_____	_____	_____
3rd:	_____	_____	_____

Phone # (required): () _____

Recognition or Dedication (max 100 characters including spaces). List the text exactly as it should appear (see samples below). **Sponsor name will NOT appear unless included within dedication.**

Artwork sponsored _____

Dedication Samples: "Artwork sponsored..."

...in honor of my son Joseph Washington"

...by Doris and Robert Brown to commemorate the work of Mildred G. Watkins"

...by Michelle and James Wallace in loving memory of our mother Joan Wallace"

...by the Longshore Restaurant"

Sponsor Name: _____

Sponsor Address: _____

Payment Options (circle one)

Check (Payable to Long Beach Museum of Art) Visa MasterCard American Express

Credit Card #: _____ Exp.: _____

Name on Card: _____

Thank you for your support! Please mail, fax or hand deliver to:

Long Beach Museum of Art, Development Department

2300 East Ocean Boulevard, Long Beach, CA 90803

Fax: (562) 439-3587

For more information or to order, please call the Development Department: (562) 439-2119 x336



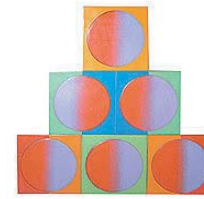
1. Jean Ames
Star Angel, 1950-51
Enamel on copper



8. Jean Ames
Evening Angel,
ca. 1955
Enamel on copper



15. Edward Winter
Burning Bush, 1963
Enamel on steel



22. Arthur Ames
Untitled,
ca. 1970
Enamel on copper



2. Doris Hall and
Kalman Kubinyi
Fish, 1958
Enamel on steel



9. Ruth Raemisch
*Two Women
with a Child*,
ca. 1940
Enamel on copper



16. Edward Winter
*Genius (Sun and
Earth)*, 1964
Enamel on copper



23. Ellamarie
Wooley
*Some Like It
Cold*, 1967
Enamel on copper



3. William Harper
Body Rattle/Mirror,
1972
Enamel on copper, silver,
gold, bone, bronze



10. Jade Snow Wong
Bowl, 1951
Enamel on copper



17. Edward Winter
Mexico, 1940
Enamel on steel



24. Kenneth F.
Bates
*Perpetual
Vine*, 1965
Enamel on silver



4. Harold B. Helwig
The Librarian, 1976
Enamel on copper



11. Karl Drerup
St. Eustace,
1949
Enamel on copper



18. Jackson Woolley
Girl in Red, 1959
Enamel on copper



25. Karl Drerup
*Logging: A
New Hamp-
shire Scene*,
1958
Enamel on steel



5. Mildred Watkins
*Peace in a Dark
World*, 1944
Enamel on copper



12. June Schwarcz
The Boat,
1955
Enamel on copper



19. June Schwarcz
*Art History Lesson -
Vezelay*, 1975
Enamel on copper



26. Arthur Ames
Garden, 1957
Enamel on copper



6. Edward Winter
Peace and War,
1938
Enamel on copper



13. Kenneth F. Bates
*My Trip to
Pittsburg*, 1945
Enamel on copper



20. Doris Hall
Andante in Blue,
1950
Enamel on copper



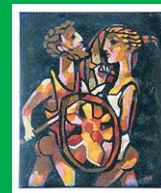
27. Ellamarie
Wooley
Frugent,
ca. 1960
Enamel on copper



7. Mildred Watkins
*Ladies of the
Women's Art Club at
Robinwood Studio*,
1946
Enamel on copper



14. Ruth Raemisch
The Lovers,
ca. 1948
Enamel on copper



21. Arthur Ames
Tancred y Clorinda,
1953
Enamel on copper



28. Ellamarie
and Jackson
Wooley
*Harlequin in
the Sun*, 1959
Enamel on copper

More artworks available for sponsorship
Call 562-439-2119 x336 for information